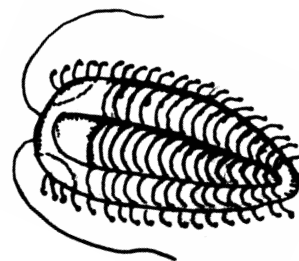
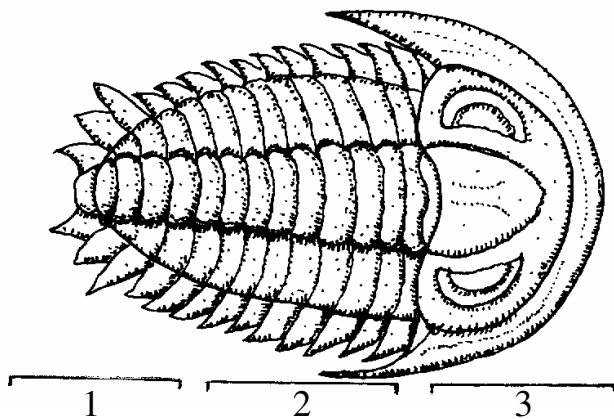


# Trilobites



Trilobite means three lobes or main parts of the body. Can you write the names by the correct numbers?



1.
2.
3.

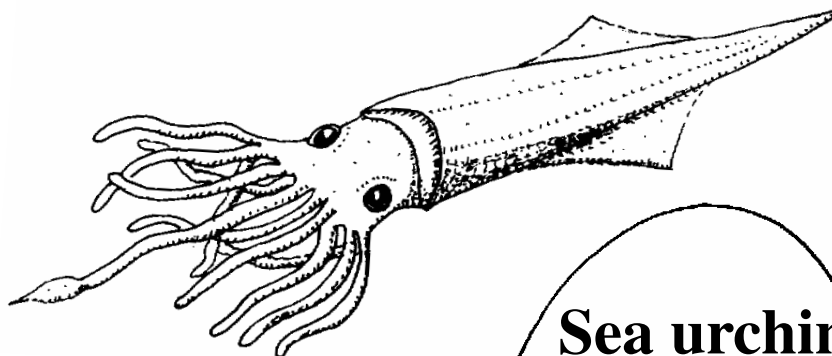
**Word bank**  
 tail  
 head and eyes  
 thorax (body)

Trilobites could roll up into a ball to protect themselves, like woodlice today. Some grew to 48cms. and had many legs. They hunted for food on the sea floor.

# Belemnites

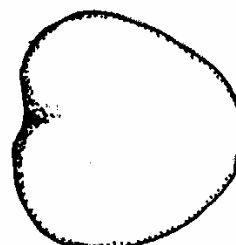
These are extinct sea creatures which looked like squids. The fossils are the remains of part of their internal shell. Draw one of the belemnites you have seen.

A belemnite may have looked like this.



# Sea urchin

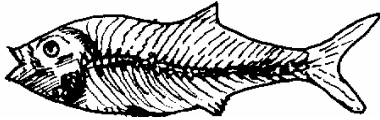
Echinoids or sea urchins are like those alive today. They have a rounded shape and live in burrows. Draw the pattern on this sea urchin.



# Picture Puzzles

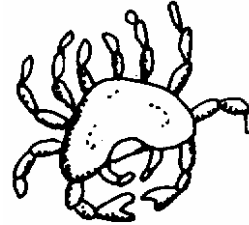
Write the names \_\_\_\_\_ under each picture.

if they can be found as fossils







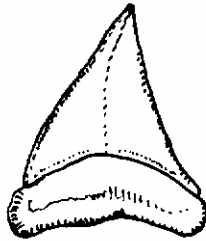


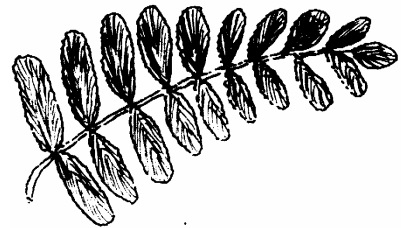





## Word bank

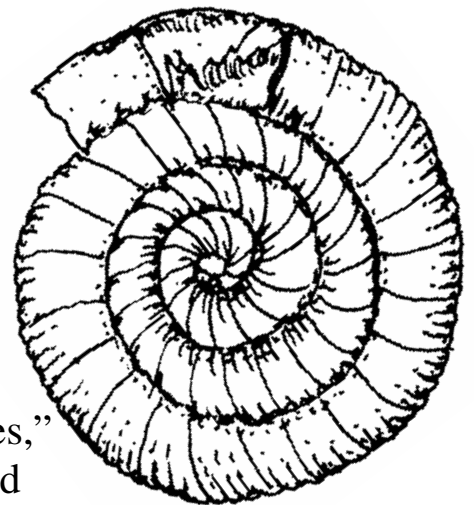
wood  
crab  
leaf  
plant  
tooth





## Ammonites

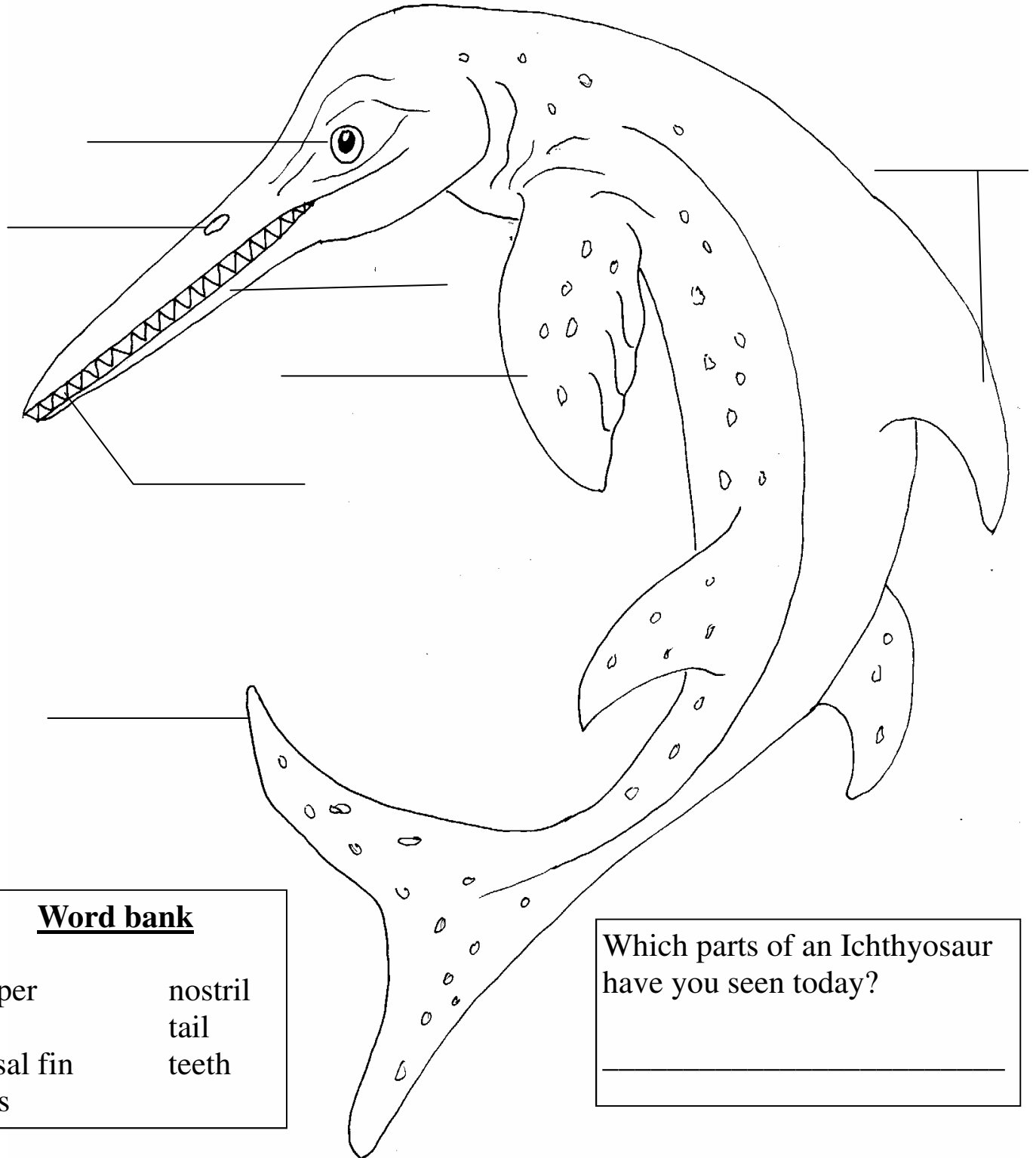


In the past, people called ammonites “snakestones,” thinking they looked like coiled snakes which had turned into stone. As the animal grew, a new chamber would form for it to move into, it lived in the space next to the opening. Can you make the drawing look like a coiled snake?

# Ichthyosaur

(Say.....Ick-thee-osawr)

Ichthyosaur, means “fish lizard,” it was not a dinosaur. Can you label this marine reptile, then colour it in?



## Word bank

flipper

nostril

eye

tail

dorsal fin

teeth

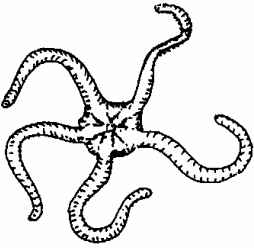
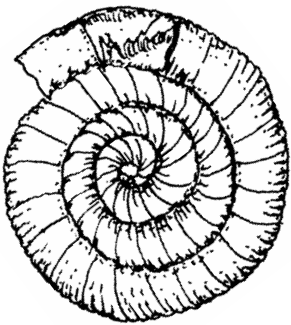
jaws

Which parts of an Ichthyosaur  
have you seen today?

---

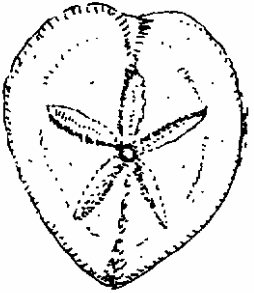
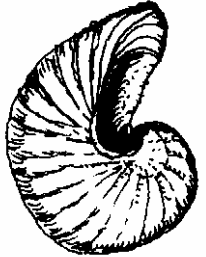
# Split words

Draw a line to complete these fossil names.



Devil's
vert
ammo
brittle
sea

nite
urchin
toenails
ebra
star



How many 2-, 3-, and 4-letter words can you make using the letters from the following word? **dinosaur**

1.	11.
2.	12.
3.	13.
4.	14.
5.	15.
6.	16.
7.	17.
8.	18.
9.	19.
10.	20.

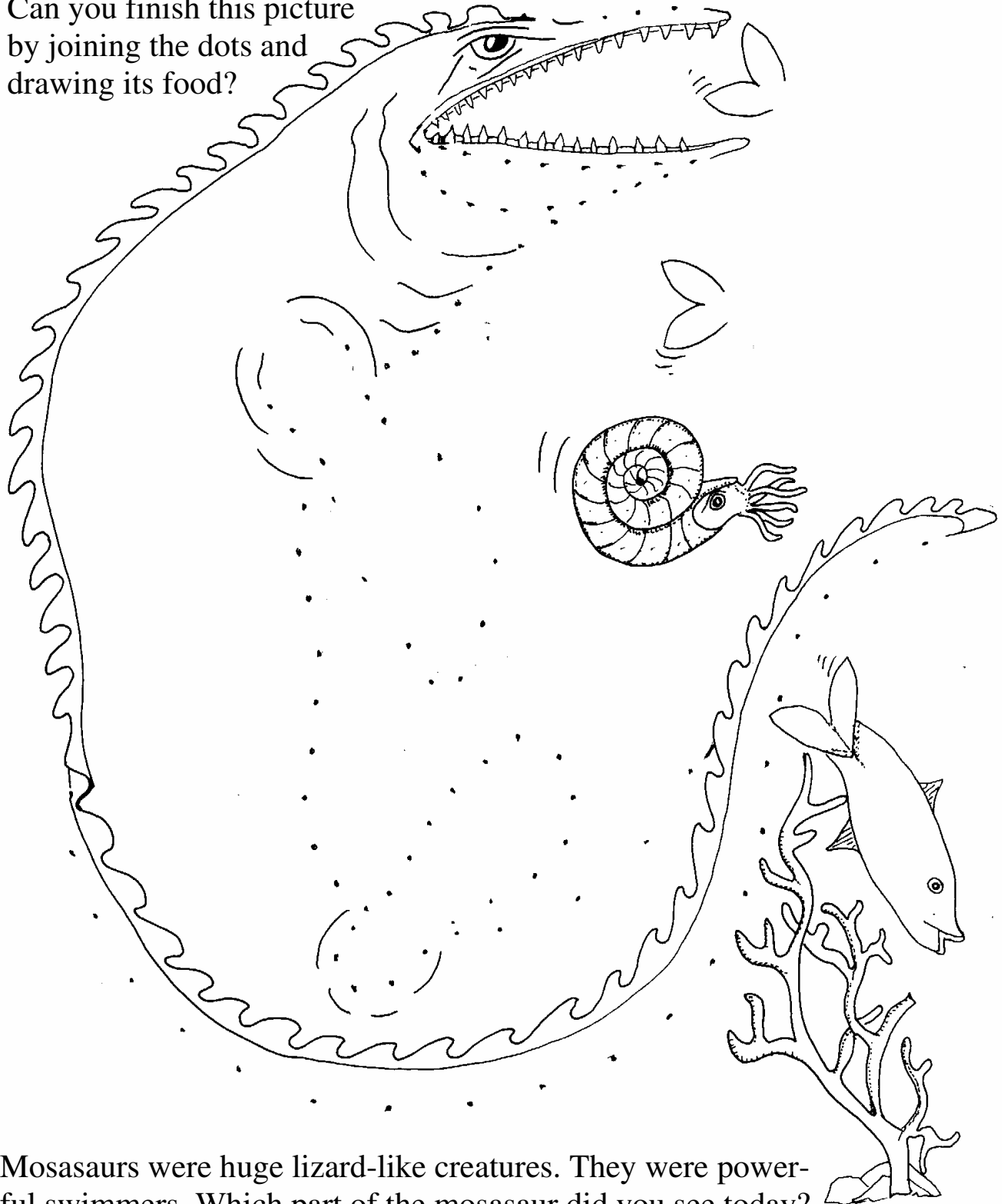
# Join the dots



What is swimming here? a \_\_\_\_\_

What is it about to eat? a \_\_\_\_\_

Can you finish this picture  
by joining the dots and  
drawing its food?



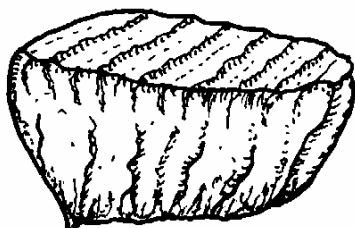
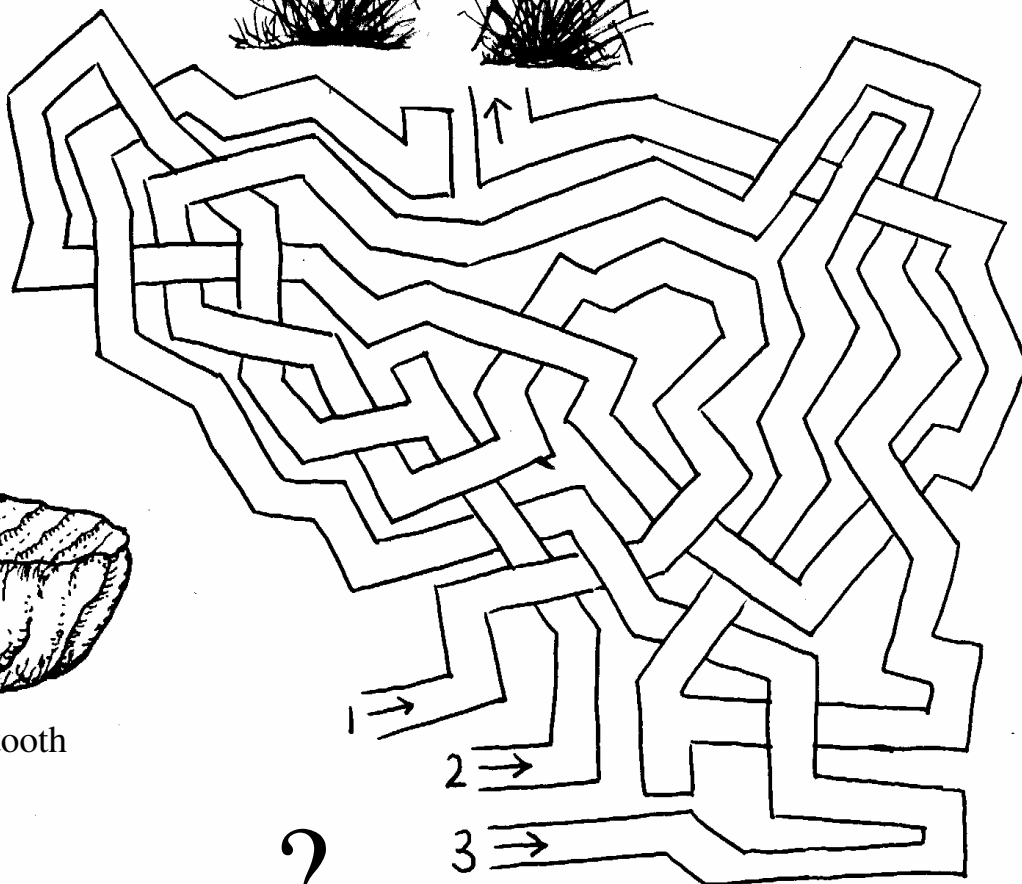
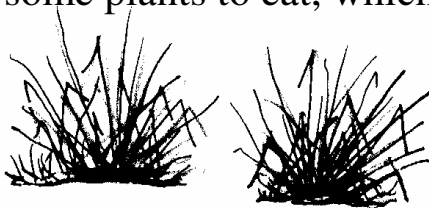
Mosasaur were huge lizard-like creatures. They were powerful swimmers. Which part of the mosasaur did you see today?

\_\_\_\_\_

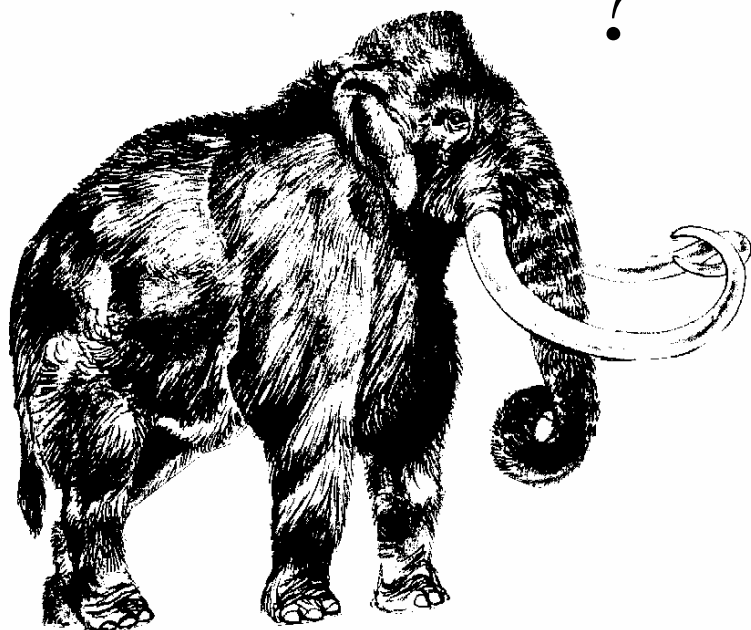
# The hungry mammoth

The mammoth is looking for some plants to eat, which path 1, 2 or 3, must it take to reach the food?

Path



A mammoth tooth



Carnivores have sharp teeth for tearing meat. Herbivores have rounded teeth for chewing vegetation.

Tick the correct box.

Was the mammoth  
a carnivore

or a herbivore ?

All the fossils are to be found in a small building in the main square near the ticket office.